

Professional digital multimeters True RMS

PAN 188

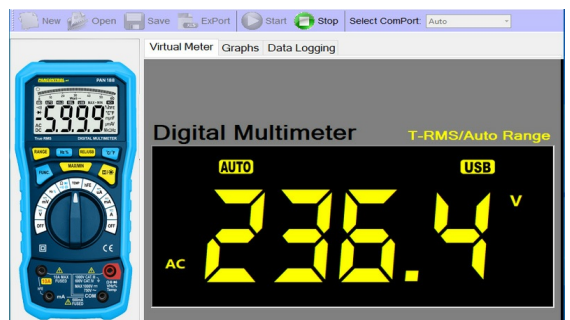
Digitalmultimeter True RMS CAT III 1000 V with Bluetooth and USB interface

- Digital Display 21 mm
- **LCD display with bargraph**
- **Backlight**
- **True RMS measurement**
- **Automatic and manual range selection**
- Data-Hold
- **Min / Max memory**
- Diode test
- **Transistor test**
- Relative mode (REL)
- **Android app**
- Auto power off

Scope of delivery: protective cover, test leads, Type-K temperature probe 40°C ~ 250°C, Bluetooth PC interface + software, Operating manual



Technical Data	PAN 188
DC voltage (V=)	0,01 mV - 1000 V
AC voltage (V~)	0,01 mV - 750 V
DC current (A=)	0,1 µA - 10 A
AC current (A~)	0,1 µA - 10 A
Resistance (Ω)	0,1 Ω - 60 MΩ
Continuity test (•)))	< 50 Ω
Frequency (Hz)	0,01 Hz - 10 MHz
Duty-cycle	0,1 - 99,9 %
Capacitance (F)	10 pF - 10 mF
Temperature (°C) (type K probe)	-20 °C - +1000 °C
Ambient temperature (°C)	0 °C - 40 °C
Dimensions	195 x 93 x 54 mm
Weight (gross / net)	948 / 358 g
Required battery(s):	4 x 1,5V AA
Measuring category (CAT)	CAT III 1000 / CAT IV 600 V
Accuracy (%)	0,7 % - 3,0 %



PAN 188 Video DE:



PAN 188 Video EN:

